

Houston Alumnae Panhellenic Association

Recruitment Information Guide



www.houston-panhellenic.org

THE
Sorority Life



Sorority Recruitment 2024



MARGARET ROTAN PHOTOGRAPHY www.margaretrotanphotography.com margaretrotaninfo@comcast.net / (713) 705-783

Table of Contents

Page 4

Timeline Checklist for Recruitment Preparation

Page 6

General Information

Page 10

Reference Packet

Page 14

Sample Social Resume

Page 17

Information for Alumnae Reference Writers

Page 18

Sorority Recruitment Requirements

Page 22

College/University Panhellenic Websites

Page 24

Houston Alumnae Panhellenic Foundation Scholarship Opportunities

Page 26

HAPA Recruitment Committee

Page 27

www.thesororitylife.com

Page 28

Greek Alphabet

Page 29

National Panhellenic Conference Sororities

Houston Alumnae Panhellenic Association

In 1929, the Houston Alumnae Panhellenic Association (HAPA) was organized and became affiliated with the National Panhellenic Conference. Every year, HAPA sponsors Recruitment Roundtable and Recruitment Registration in order to encourage participation in the Sorority Recruitment process, to educate prospective members, and to answer questions regarding the women's fraternity system.

Timeline Checklist

For the most comprehensive information on the recruitment process, go to the National Panhellenic Conference's website: www.npcwomen.org. There is a Parent Information Page that is a great resource.

March

- Schedule portrait sittings, if necessary.
- Update your social resume.
- Determine which sororities are on your campus.
- Compile list of alumnae to write Reference Information Form/Letter of Support (RIF/LOS).
- Clean up your social media accounts.

March/April

- Register with Houston Alumnae Panhellenic at www.houston-panhellenic.org. Under the "Registration" menu, **Deadline May 1, 2024**.
- Register with your college Panhellenic. Fees will apply and late fees may be applicable.
- Check your college Panhellenic for deadlines. (NOTE: Registering with your COLLEGE Panhellenic is different than registering with the HOUSTON Panhellenic.)
- Contact RIF/LOS writers to determine if they are willing to sponsor you. Obtain transcripts from high school. These do not need to be "official." Black out social security number, if necessary.
- Put together the appropriate number of packets for RIF/LOS writers (determine if packet should be electronic or printed.)
- Attend Panhellenic Open House on your campus, if offered.
- Deliver packets to RIF/LOS writers. Deadline for delivery to the local Alumnae Recruitment Chairman is **May 1, 2024**.
- Follow up by writing thank you notes to your RIF/LOS writers.

May

- Deadline for delivery of all RIF/LOS packets to local Alumnae Recruitment Chairmen is May 1st.

June/July

- When attending your college orientation, make sure to attend any events sponsored by the college Panhellenic.



FRENCH CUFF
b o u t i q u e

STOP BY YOUR NEIGHBORHOOD
BOUTIQUE FOR NEW ARRIVALS,
PERSONALIZED STYLING
AND HEAD-TO-TOE LOOKS.

4048 BELLAIRE BLVD
6401 WOODWAY DR, STE 127
791 TOWN & COUNTRY BLVD, STE 144

FRENCHCUFFCO.COM | @FRENCHCUFFCO

General Information

Houston Alumnae Panhellenic Association (HAPA): HAPA will help provide you with general sorority information and will notify Houston Alumnae groups of your intent to participate in membership recruitment. THIS DOES NOT REGISTER YOU WITH YOUR COLLEGE PANHELLENIC. Please register online for recruitment at the Houston Panhellenic website: www.houston-panhellenic.org under the “Recruitment” menu. Online registration will open February 24, 2024.

By May 1, 2024, register online at www.houston-panhellenic.org. If you miss this deadline or fail to register with HAPA, it does NOT mean that you will not be able to participate in recruitment. The May 1st HAPA deadline is the same whether your school has fall or spring recruitment because the sorority members use the summertime to get organized and ready for recruitment regardless of when.

Campus Panhellenic Association: When you register with your campus Panhellenic (which is required), they will send you information about what you can expect during the recruitment process on their campus. Campus registration dates vary, so check their website for the deadline at your university/college. Don't forget Follow your College Panhellenic on social media!

Recruitment: The recruitment process typically includes three or four events. These events are intended for you to learn more about each sorority and their philanthropies. Recruitment is a selection process made mutually between the sororities and you. The period of recruitment varies by campus and usually lasts for several days, but it may go as long as a couple of weeks.

Sorority Membership...It's for life! All sororities were created with the desire for friendship, leadership, achievement, and philanthropy in their pursuit of higher education. There are numerous benefits in joining a sorority including: they offer you a home away from home; help make the university/college smaller by providing an easy way to connect with others; give you an opportunity to develop leadership skills; membership provides a lifetime of friendship through alumnae associations across the globe. Alumnae groups are among the most noted organizations throughout a community due, in large part, to their support of non-profit organizations. Sorority membership IS for life. For more information on the benefits of joining a sorority (along with numerous other topics) go to: www.thesororitylife.com.

GPA: Many sororities encourage scholastic excellence for their members; as a Potential New Member (PNM) during recruitment, be sure to inquire about each NPC sorority's individual GPA requirement for membership.

Scholarship: Every sorority wishes to maintain a high chapter grade point average; therefore, each must consider a woman's ability to adhere to its scholastic standards. There is an expectation that each student recruited will place importance upon the completion of her education and remains involved with the sorority for the full four years.

Compatibility: Sororities are based upon friendship, congeniality, and mutual ideals. The ability to get along with others and the enjoyment of being with people of diverse personalities is a desirable quality.

Involvement: Those who are group-oriented and who enjoy working with people are more likely to contribute to sorority operations and to benefit from membership. The PNM's resume should show a desire to not only "join" an organization, but to also be invested in that organization through their time and leadership. A resume showing the quality of involvement in an organization is more important than the quantity of activities.

Financial Responsibility: Membership dues finance each sorority. Women participating in the membership recruitment process should be aware of the cost of sorority membership and be willing to accept this financial obligation.

Cost of membership: Expenses for sorority membership include PNM fees, initiation fees, building fees, and dues. To secure accurate information regarding the expenses for sorority membership on your campus please go to the campus website and search for "panhellenic" (See following pages for web site addresses.) Review the material on the university/college website or contact the Panhellenic Council on the campus you are attending to find out specific costs for sorority membership at that particular campus. Fees will vary by sorority. This information changes from year to year and the Panhellenic office at each campus has the most up-to-date information regarding these costs. They will be your most reliable source for this information. In addition to these expenses, there may be fees for events and other items.

It's a Mutual Decision: National Panhellenic Conference (NPC) sororities are private, social organizations. These collegiate groups have the right to invite those PNMs into their membership who they consider to be the best all-around fit for their organization. The privilege of choice is mutual for both the sorority and the PNM.

It is best not to make up your mind about joining any sorority before you have met its active

collegiate members. Remember that you are not joining a "name" but choosing a closely-knit group in which you expect to make lasting friendships in college and alumnae life. Also, remember that individual sororities differ from campus to campus, and there are girls in every sorority with whom you can develop lasting friendships. Enter recruitment with an open mind.

At preferential signing at the end of the membership recruitment events, you are encouraged to list more than one sorority in order to maximize your chances for sorority membership. Please understand that when you receive your invitation for membership, it could be your second or third choice that has offered you membership.




Sparkle + Excite + Unite!

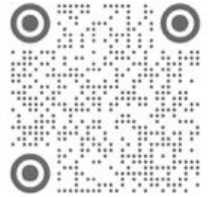


CINDY CROFFORD
PHOTOGRAPHY

12470 Memorial Drive • Houston, Texas 77024 • 713-468-1341

www.cindycroffordphotography.com

 [cindy_crofford_photography.com](https://www.instagram.com/cindy_crofford_photography.com)



Reference Packet

The 26 National Panhellenic Conference (NPC) member organizations have agreed that the responsibility for providing letters of recommendation for potential new members rests with the members of NPC sororities. Any recruitment information distributed by College and/or Alumnae Panhellenics may not state or infer that letters of recommendation are to be secured by potential new members.

Suggestions for Getting Organized – BEGIN NOW

Make a list of all of the sororities at the universities/colleges you are considering. You can find this list by searching for the campus's panhellenic website or the student life tab on the university's website and look for the list of NPC sororities.

HAPA has compiled the reference and/or letters of support information with regards to the recruitment requirements of the 26 Panhellenic sororities within the following pages. However, the responsibility of member organizations to educate PNMs of their individual requirements regarding references and/or letters of support. All information provided to the reference writer is called a recruitment packet. If required or requested by a member organization, your RIF writer will send the pertinent information listed within your recruitment packet to the member organization.

Prepare your social resume. A sample format is provided on the following pages (15-16).

As soon as you have your recruitment packets together, email it to each individual who will be writing a RIF on your behalf.

A "thank you" note is always appreciated, HAPA and NPC discourage gifts of any size to your sponsor.

Register:

- 1) with HAPA by May 1, and
- 2) with your university/college Panhellenic before their deadline

Pictures

The pictures are used so that the sorority members will recognize you when you arrive at the party. They are NOT used to judge you. Make sure all photos represent you well. It is highly recommended you not make drastic appearance changes from the time your photos are taken until after recruitment occurs. This way, the active members will know you when you walk through their doors. Sororities will accept emailed photos with a quality resolution as stated in the guidance on the following pages.

The photos do not need to be taken by a professional. The picture should be clear enough to be scanned. It is best not to include anyone else, including a pet, in your picture.

The photo file title should include your name, high school, and university. (See pages 25-26 for a sample.)

Present your scholastic and extracurricular activities and honors in a clear and concise format. List your sorority legacy information. Each sorority has its own definition of a “legacy.” It is generally defined as a daughter or sister of an initiated member. Some sororities also recognize a granddaughter, stepdaughter or stepsister. Sororities cannot guarantee invitations or membership to legacies. At times, there are more legacies entering recruitment than a college chapter has membership openings. Legacies must meet the same qualification standards that non-legacies meet, but if you are a legacy to any sorority, you should list them on your resume.

Social Resume

DO NOT put your social security number on any documents. Mark it out on transcripts.

A copy of your school issued transcript is all that you need for those groups requiring a transcript.

Sign the transcript if you are 18; have a parent sign it if you are younger than 18.

If the transcript does not include your SAT and/or ACT scores, then include copies of those as well.

Reference Information Form (RIF)

Each sorority has their own submission form. It is obtained by the author of your RIF as required by the individual member organization. If you are undecided by the end of April regarding which university you will attend, have your reference writer notate the RIF, listing the schools you are considering.

Letters of Support

Letters of support are optional. A LOS is nothing more than a personally written letter of recommendation written on your behalf. A LOS should be written by someone who knows you personally; it's a great opportunity for an alumna to share a few personal things about you that might not be written in the RIF. Check online to make sure that each sorority will accept LOS.

Social Media

Once the actual recruitment process has begun, no sorority member should request to follow/contact with you through ANY social media. Most forms of social networking are accessible to others, including sorority members. You should "clean up" your accounts NOW. Be mindful of your security settings, accepting friends, and sharing personal information and private photos online. This type of information will be accessible to sorority members during the entire recruitment process!

IMPORTANT: Although HAPA has tried to provide the most up-to-date information regarding sorority recruitment, it is imperative you:

- 1) go to each sorority's website for their individual requirements
- AND
- 2) go to your university's website to find out exactly what their Panhellenic requirements entail.

According to the NPC Manual July 28th Edition, all PNMs should have positive panhellenic contact with events representing all NPC organizations rather than in a chapter house, event, or individual sorority member's home.

If you have questions or concerns, depend on your recruitment counselor during the recruitment process as they are available to PNMs at all times. They may go by Rho Chi, Rho Gamma, or other variation of Greek letters, and are assigned to you for the duration of the process.



JSP
Jordan Scheiner Photography



713.828.0374

jscheinerstudio.com



FULL NAME

HIGH SCHOOL NAME

GRADUATION YEAR

With Honors/Magnum Cum Laude/Cum Laude

GPA ### (on a ## scale) Class Rank ## (out of ###) OR

School does not rank

SAT (English ; Math ; Reading ; Science) & ACT

--- --- --- --- ---

CONTACT

Email (Not School Email)

Social Media/Facebook

Social Media/Instagram

Social Media/Tik Tok

Social Media/Threads

Phone Number

Home Address 1

Home Address 2

SCHOOL SPORTS, CLUBS, LEADERSHIP & HONORS

Sport 1

Date - Date

- Captain/Leadership Role
- Awards/Honors

Sport 2

Date - Date

- Captain/Leadership Role
- Awards/Honors

Club 1

Date - Date

- Captain/Leadership Role
- Awards/Honors
- Committee Work

Club 2

Date - Date

- Captain/Leadership Role
- Awards/Honors
- Committee Work

COLLEGE/UNIVERSITY NAME

City, State

Major:

Scholarships related to college
admittance

OTHER HONORS & AWARDS

Scholarships

Years

Honor Roll

Years

Homecoming Court, Art/Music/Writing Awards

SPECIAL SKILLS HOBBIES & GOALS

- Travel
- Photography/Art/Music
whatever talents you have
- Proficient in Microsoft Office &
Photoshop
- Bilingual _____

FULL NAME CONT.

FAMILY INFORMATION

Mother

First Maiden Last Name

Work

Email

Cell

College

Sorority Affiliation

Father

First Maiden Last Name

Work

Email

Cell

College

Fraternity Affiliation

Siblings

First Last Names

Schools

Email

Fraternity/Sorority Affiliations

If you have any

Aunts/Uncles/Cousins/Grandparents
who are in fraternities/sororities, list
relation:

Family Relation

First Maiden Last Names

College

Fraternity/Sorority Affiliations

SCHOOL VOLUNTEER EFFORTS

- Mentor, Tutor, Sales, Concession's worker, Spring Fling worker, Computer Recycling Project, Collections for those in need, etc.

COMMUNITY SERVICE, LEADERSHIP & AWARDS

National Chairty League/Girl Scouts/ etc.

Date - Date

- Officer/Leadership Role
- Projects
- Awards/Honors
- Total Annual Hours

XYZ Volunteer

Date - Date

- Officer/Leadership Role
- Projects
- Awards/Honors
- Total Annual Hours

Service Project

Date - Date

- 100 Hours at _____

Mission Trip to -----

Date - Date

OTHER ACTIVITIES

Church

Date - Date

- Projects/Involvement

Competitive Sports

Date - Date

- Championships

IMPORTANT!!

DO NOT include your Social Security number on your resume. Be sure to mark through your Social Security number on your transcript.

Sorority Recruitment Packets

Referrals and rush can be stressful. Let The Social Note make life a little easier for you and design a recruitment packet you are proud to present!



Check out thesocialnote.com for more details and pricing.

Graduation Announcements

Let The Social Note save you time from sifting through online sites for hours trying to choose a card that fits your photo - we will create a design around the photos you submit!



Check out thesocialnote.com for more samples and pricing.

the
social note
ALL THINGS PAPER AND DESIGN

ANNETTE ZUANICH | 832.549.4210 | ANNETTE@THESOCIALNOTE.COM

Information for Alumnae Reference Writers

It is an honor and privilege for sorority alumnae to introduce Potential New Members (PNMs) to their sorority, and it supports the continued growth of the sorority and the Panhellenic community in general. This process is accomplished through the use of a Reference Information Form (RIF) and Letters of Support (LOS). Each NPC sorority has its own reference process.

The alumna is responsible for submitting the RIF to her sorority. Do not give the RIF to the PNM. If you are not personally acquainted with the PNM, you may request a meeting or an interview. It is against NPC guidelines for the alumna to accept gifts from a PNM, but the PNMs are strongly encouraged to write thank you notes.

The Reference Information Forms for each sorority may be found on the respective sorority's website (see the following pages for a complete list). These are generally password protected so you must register with your alumnae association online before you begin writing a RIF. All instructions regarding how to complete a RIF/LOS will be provided on your sorority's website.

In Houston, many of the NPC sororities have a local Alumnae Recruitment Chairman (ARC) who can assist in this process. Please reach out to them by contacting your local alumnae group or going to the HAPA website "Recruitment" menu.

If you are introducing your daughter/granddaughter as a legacy, you need to follow the procedures outlined by your sorority. There is no guarantee that your legacy will be invited to specific rounds or offered membership. It is highly discouraged for a mother or sister to write a RIF/LOS for the PNM going through recruitment.

HAPA asks that you do your best to seek answers for any questions you have via your sorority alumnae association, college chapter, or national headquarters as they will have the most accurate information. In the event you still need help, you may contact any HAPA Recruitment committee member listed on page 30 of this guide.

Sorority Recruitment Requirements

(RIF: Recruitment/Reference Information Form: LOS: Letter of Support)

ΑΧΩ Submit information via email to the Alpha Chi Omega recommendation writer. Include resume (parents' information, Facebook/Twitter accounts, GPA/scale, ACT/SAT scores(s) (optional), legacy or other sorority affiliations, and transcript (if available). LOS not required or accepted.

ΑΔΠ Fill out the Introduce yourself form at <https://www.alphadeltapi.org/join>. Email to your Alpha Delta Pi RIF writer the following: One resume and photo. Electronic submission of recommendation is preferred at www.alphadeltapi.org. Please also send a copy of your submission to houstonadpi.recruitment@gmail.com.

ΑΕΦ One full length photo, 1 portrait, 1 copy of resume, 1 transcript, SAT/ACT Scores, 2 LOS, optional.

ΑΓΔ One full length and 1 portrait with full name on back. One copy of resume, 1 copy of transcript SAT/ACT scores. One LOS recommended. Alumnae may submit LOS/references either electronically or hard copy.

ΑΟΠ Submit information electronically to Reference writer. Include resume, transcripts, GPA and ACT/SAT scores (optional), letter of recommendation and 1 photo.

ΑΦ Email your RIF writer one portrait and one copy of your Social Resume including parents' information, Facebook/Twitter/Instagram accounts, and one transcript with grades, GPA/scale, ACT/SAT scores. One LOS requested. Alumnae may request electronic format.

ΑΣΑ One portrait (optional), one copy of resume, transcript SAT/ACT scores (optional). Alumnae may request electronic format. References no longer needed.

ΑΣΤ One full length, 1 portrait, 1 copy of resume, 1 transcript, SAT/ACT scores. 1 LOS (optional).

ΑΞΔ Potential new member recommendations may be submitted, but are not required, by an alumna in good standing within the fraternity. Alumnae may either mail in the recommendation letter or submit digitally via the Alpha Xi Delta's website. A full-length photo and headshot should be submitted along with the PNM's transcript and resume. (<https://www.alphaxidelta.org/recommend-a-member>) Please refer to the PNM' school Panhellenic website with regards to recommendation requirements.

ΧΩ E-mail only (no hard copies) RIF writer the following: Resume (pdf or docx), Head/Shoulder Photo (1MB max-jpeg preferred), Transcript, Act or SAT scores. No packets necessary. Separately, email only (no

ΧΩ

hard copies) same information to (2) Letter of Support writers. LOS writers email LOS directly to the collegiate chapter's Recruitment Advisor which can be found at www.chiomega.com under Interactive Tools. LOS writers should also CC recruitment@chiomegahouston.com on their email. The PNM doesn't need to send anything directly to the chapter. Questions? Go to <http://www.chiomegahouston.com> and click Collegiate Life > Recruitment.

ΔΔΔ

Email your RIF writer AND our local recruitment chair at DDDhoustonreferences@gmail.com. In the email subject line, please include PNM's name and university. Please include the following: one photo, resume, social media info, high school info (location, activities, GPA/scale, honors) sorority affiliations and scholarships awarded. SAT/ACT scores (optional). LOS (optional). For more info go to www.houstontridelta.com/reference or www.tridelta.org.

ΔΓ

Both members and non-members are able to complete an online Recommendation Form on behalf of a potential new member (PNM) they know personally at www.deltagamma.org/our-membership/recommendation/. Your resume, high school info (location, class size, rank, GPA) and SAT/ACT scores may help your writer provide a more useful Recommendation. For questions or help finding a recommendation writer: DGHoustonSponsorship@gmail.com.

ΔΦΕ

One portrait (optional), 1 resume, transcript SAT/ACT scores (optional). Alumnae may request electronic format.

ΔΖ

One full length, 1 portrait, 1 resume, 1 transcript SAT/ACT scores, LOS is optional.

ΓΦΒ

Anyone can write a PNM Introduction, including Gamma Phi Beta members, non members and PNMs. By allowing anyone to submit a PNM Introduction, we provide an equal opportunity for any PNM to have a form submitted on their behalf. The form can be found at www.gammaphibeta.org/membership. If you have difficulty securing a reference writer, please email: gammaphihoustonalumnae@gmail.com.

ΚΑΘ

A PNM may select any person who may speak to the PNM's character and values to submit a Potential New Member introduction form, which is optional and can be found online of www.kappaalphatheta.org. No login info is required to complete and submit this form.

ΚΔ

Electronically submit to your reference writer a social resume, transcript, and 1 head/shoulder photo. Social resume should include class rank; GPA/Scale; email address, social media, parents' contact info. & sorority affiliations. No LOS. Instructions for reference writers can be found at: www.houston.kappadelta.org. Questions: kdhoustonreferences@gmail.com.

ΚΚΓ

Email a resume and one headshot to your KKG RIF writer AND to our local recruitment chair at kkghouston@gmail.com. In the email subject line, please include PNM's name and university. No

transcript, score reports or LOS are needed. For additional information, visit www.HoustonKappas.org.

ΦΜ

Reference forms are no longer required for consideration for membership, nor will the chapters utilize them. Former requirements for a reference have been replaced by the National President endorsing all PNMs for consideration in Phi Mu.

ΦΣΣ

One portrait (optional), 1 resume, transcript & SAT/ACT scores (optional). Alumnae may request electronic format.

ΠΒΦ

In order to be registered with the Houston Alumnae Club for our support, please email your resume (pdf) and photo (jpeg) to rifhoustonpiphi@gmail.com. RIF and LOS are optional. However, if you know an alumna who would like to submit either on your behalf, please refer her to our website: www.houstonpiphis.org for detailed instructions.

ΣΔΤ

An alumna may request a resume and must use the online submission at [https://sigmadeltatau.org/join-us/sisterhood-experience/life-after-college/recommend-a member/](https://sigmadeltatau.org/join-us/sisterhood-experience/life-after-college/recommend-a-member/).

ΣΣΣ

No formal recruitment requirements. However, local universities may have individual preferences. Please consult the local university you will be attending.

ΣΚ

One portrait, 1 resume, 1 transcript SAT/ACT scores. Send information to Phyllis Prange: vhprange@aol.com.

ΘΦΑ

For recruitment requirements, please consult the local university you will be attending.

ZTA

ZTA upholds all NPC Unanimous Agreements pertaining to Recruitment. ZTA does not accept PNM packets. Photos and transcripts will not be accepted. ZTA does not require a MIS (rec), letter of recommendation or a reference. None of these will give a PNM an advantage over another in Recruitment. Alumnae in good standing are encouraged to submit the online MIS (rec) for a PNM with whom she has a close personal relationship. Alumnae should avoid submitting a MIS (rec) in response to a request from a PNM she does not know. Instead, encourage the PNM to explore her own personal network (school staff, family friends, neighbors, etc.) to find an alumna who knows her personally.



THE
MONOGRAM
SHOP



SWOON

@SWOONTX | @THEMONOGRAMSHOP
5886 San Felipe St, Houston, TX 77057

COLLEGE/UNIVERSITY PANHELLENIC WEBSITES

If the university you will be attending is not listed, Google the university name plus “panhellenic” or “sorority life” and their web site will come up if they have Sorority organizations on campus that recruit new members. Reference www.thesororitylife.com for more information on sororities.

Auburn University	http://greeklife.auburn.edu/panhellenic/
Baylor University	https://www.baylor.edu/studentactivities/index.php?id=947550
Houston Christian University	https://hc.edu/student-life/campus-life/student-involvement/greek-life/sorority-recruitment/
Louisiana State University (LSU)	https://www.lsu.edu/greeks/community/councils/chapters/phc/index.php
Ohio University	https://www.ohiowpa.com
Oklahoma State University	https://lcl.okstate.edu/gogreek/panhellenic-council.html
Ole Miss	https://panhellenic.olemiss.edu/
Pepperdine University	http://www.pepperdinepanhellenic.com
Sam Houston State University	https://www.shsu.edu/dept/dean-of-students/greek-life/Council/npc/home.html
Southern Methodist University (SMU)	https://www.smupanhellenic.com
Southwestern University	https://www.southwestern.edu/life-at-southwestern/studentorganizations/greek-social/national-panhellenic-conference/
Stephen F. Austin University	http://www.sfasu.edu/studentaffairs/106.asp
Tarleton State University	https://www.tarleton.edu/greeklife/panhellenic-council/
Texas A&M University	https://cpc.tamu.edu
Texas A&M University – Corpus Christi	https://www.tamucc.edu/student-activities/fsl/panhellenic.php
Texas Christian University (TCU)	https://tcupanhellenic.com
Texas State University	https://pc.dos.txstate.edu
Texas Tech University	https://www.ttupanhellenic.com
Texas Woman’s University	https://twu.edu/sfl/greek-councils/panhellenic-council-pc/
UCLA	https://www.uclapanhellenic.com

University of Alabama	https://www.uapanhellenic.com
University of Arizona	https://www.uofapanhellenic.com
University of Arkansas	https://uagreeks.uark.edu/panhellenic-council/recruitment/
University of Florida	https://www.ufpanhellenic.org
University of Houston	https://www.uhpanhellenic.com
University of Mississippi (Ole Miss)	https://panhellenic.olemiss.edu
University of North Texas	https://studentaffairs.unt.edu/cfsl/programs/councils-and-chapters/collegiate-panhellenic-council
University of Georgia	https://greeklife.uga.edu/panhellenic-council/
University of Oklahoma	https://www.ou.edu/studentlife/fsps/pan
University of Oregon	https://uopanhellenic.com
University of Southern California (USC)	https://www.uscpanhellenic.com
University of Texas at Austin	https://texaspanhellenic.com
University of Texas at Dallas	https://gogreek.utdallas.edu/panhellenic/
University of Texas at El Paso	https://www.utep.edu/student-affairs/selc/fraternity-and-sorority-life/panhellenic-council.html
University of Texas at San Antonio	https://utsa.campuslabs.com/engage/organization/panhelleniccouncil
University of Virginia	https://fsl.virginia.edu
Vanderbilt University	https://www.vanderbilt.edu/greek_life/meet-the-greeks/panhellenic-council/
Virginia Tech University	https://vtpanhellenic.org

Houston Alumnae Panhellenic Foundation Scholarship Opportunities

Since its inception in 1987, the HAPF Scholarship Fund has awarded \$1,301,200.00 in scholarships to 677 sorority women attending Texas and out-of-state universities and colleges. HAPF strives through its scholarships to help these young women excel academically and learn leadership skills. Many of the past winners are not only representatives and role models in their sororities, but they also are active contributors to numerous on-campus organizations. While attending school full-time, many work part time jobs to offset the cost of their educations.

The range of scholarships to be awarded is between \$3,000 and \$6,000.

In 2023:

- \$98,500 was awarded to 26 deserving sorority members. 12 sororities were represented.
- 8 Texas universities were represented.
- 8 out-of-state universities were represented.
- 11 of these recipients were repeat winners; 2 are three-time winners, and 9 are two-time winners

Scholarships are awarded annually at the HAPF May luncheon. The next deadline will be February 15, 2024, with scholarships presented in May 2024.

To see criteria and apply, please go to the HAPA website:

www.houston-panhellenic.org

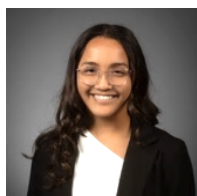


Founded in 1987, HAPF has awarded 684 scholarships, totaling \$1,301,200.00 to collegiate sorority women across the country.

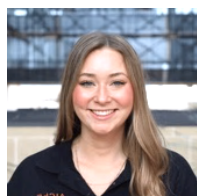
Congratulations to the 2023 Scholarship Winners!



Jamesy
Louisiana State University



Chloe
Texas Tech University



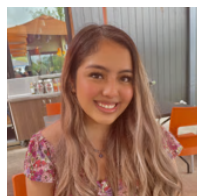
Briana
University of Texas



Claire
University of Houston



Dia
University of Texas
Dallas



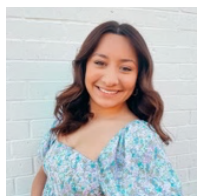
Rebeca
University of Houston



McKenna
Stephen F. Austin State
University



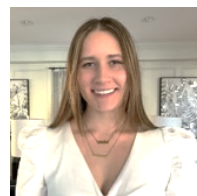
Cammy
Ohio University



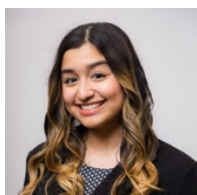
Jazmin
Texas A&M University



Emma
Texas A&M University



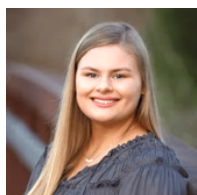
Isabella
University of Missouri



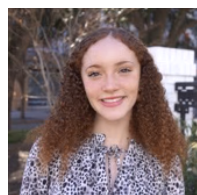
Ana
University of Texas
Tyler



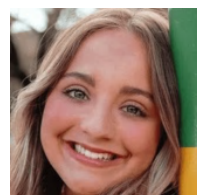
Addyson
Florida State University



Emily
University of Texas



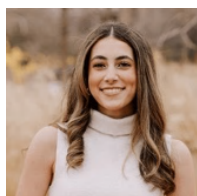
Rory
University of Texas



Hannah
Texas A&M University



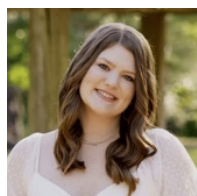
Danielle
Texas State University



Hayv
Texas A&M University



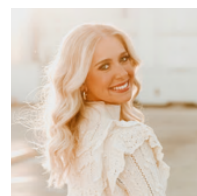
Laine
Louisiana State University



Clare
Louisiana State University



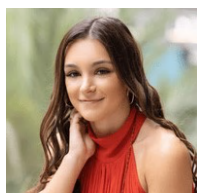
Ashley
University of Texas



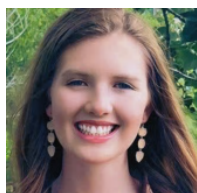
Annalise
University of Oklahoma



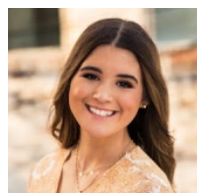
Madeline
University of Texas



Kiley
Auburn University



Katelyn
University of Mississippi



Reece
Oklahoma State
University



Jamison
Auburn University

HAPA Recruitment Committee

Chairman:

Karen Kelly Miller

karenkellymiller@yahoo.com

Co-Vice Chairmen:

Martha Blecher & Amy Bertelsen Hill

mblecher@sbcglobal.net

ahb3105@yahoo.com

University of Texas:

Jennifer Carmichael: carmichael928@gmail.com

Jill Mannino Peck: vvukd@yahoo.com

Texas A&M University:

Kelly Willbanks: klarrow103@gmail.com

Oklahoma & Other Texas Schools:

Jessica Forsdick: jessicaforsdick@yahoo.com

Kim Rexford: krexford@rexfordcapital.com

SEC (excluding A&M and UT) & Out of State Schools:

Joni Fichter: cptemps@aol.com

Jamie Tharpe: jamietharpe40@comcast.net

****The Recruitment Committee Co-Chairs are here to help you with GENERAL Recruitment information. If you are seeking sorority-specific help, please first try to find a local alumnae chapter through their website, Facebook, or other social media.**

REMEMBER:

ALL REGISTRATIONS MUST BE COMPLETED ONLINE

www.houston-panhellenic.org

Please DO NOT mail your registration to HAPA

Please visit HAPA on Facebook, Instagram, and Twitter

www.facebook.com/houstonalumnaepanhellenic

<https://www.instagram.com/houstonpanhellenic/>

<https://twitter.com/AlumnaeHouston/>

www.thesororitylife.com

*Provides Information and Answers
About the Recruitment Process and Sorority Life*

Being in a sorority is NOT what you see on TV and in movies.

Yes, there are social functions, fraternity men, and visitors from the international organizations, but life does not revolve around these things. It is so much more!

What It Is

- A life-long support system that provides career opportunities and networking opportunities during college and in the real world
- An organization that values philanthropy and community service
- A place where women learn to be leaders
- A place to meet amazing friends who will be there for you when you need them A place to enjoy formal dances, date parties, intramural sports, and other fun social events

What It Is NOT

- A place that puts your looks and wardrobe ahead of your values and personality Full of ditzy girls who are only out to have a good time
- A place that will haze you or make you do things against your will full of rich, spoiled, and snobby girls
- A place that is only interested in your money while you're in school and will forget about you after you graduate

What Sororities Offer

- College offers the opportunity to learn.
 - Sororities provide the motivation.
- College life offers a wide range of activities.
 - Sorority life involves members in them.
- College life offers social events.
 - Sorority life offers a social experience.
- College offers a room.
 - Sorority life offers a home.
- College life offers the benefits of community.
 - Sorority life involves you in the community.

The Greek Alphabet

Α	Β	Γ	Δ	Ε	Ζ
Alpha	Beta	Gamma	Delta	Epsilon	Zeta
Η	Θ	Ι	Κ	Λ	Μ
Eta	Theta	Iota	Kappa	Lambda	Mu
Ν	Ξ	Ο	Π	Ρ	Σ
Nu	Xi	Omicron	Pi	Rho	Sigma
Τ	Υ	Φ	Χ	Ψ	Ω
Tau	Upsilon	Phi	Chi	Psi	Omega

The Definition of “Fraternity”

The state or feeling of Friendship and Mutual Support within a group.

National Panhellenic Conference (NPC) Sororities

Alpha Chi Omega	www.alphachiomega.org
Alpha Delta Pi	www.alphadeltapi.org
Alpha Epsilon Phi	www.aepi.org
Alpha Gamma Delta	www.alphagammadelta.org
Alpha Omicron Pi	www.alphaomicronpi.org
Alpha Phi	www.alphaphi.org
Alpha Sigma Alpha	www.alphasigmaalpha.org
Alpha Sigma Tau	www.alphasigmatau.org
Alpha Xi Delta	www.alphaxidelta.org
Chi Omega	www.chiomega.com
Delta Delta Delta	www.tridelta.org
Delta Gamma	www.deltagamma.org
Delta Phi Epsilon	www.dphie.org
Delta Zeta	www.deltazeta.org
Gamma Phi Beta	www.gammaphibeta.org
Kappa Alpha Theta	www.kappaalphatheta.org
Kappa Delta	www.kappadelta.org
Kappa Kappa Gamma	www.kappakappagamma.org
Phi Mu	www.phimu.org
Phi Sigma Sigma	www.phisigmasigma.org
Pi Beta Phi	www.pibetaphi.org
Sigma Delta Tau	www.sigmadeltatau.org
Sigma Kappa	www.sigmakappa.org
Sigma Sigma Sigma	www.trisigma.org
Theta Phi Alpha	www.thetaphialpha.org
Zeta Tau Alpha	www.zetataualpha.org



Creed of the National Panhellenic Conference (NPC)

We, as undergraduate members of women's fraternities, stand for good scholarship, for guarding of good health, for maintenance of fine standards, and for serving, to the best of our ability, our college community. Cooperation for furthering fraternity life, in harmony with its best possibilities, is the ideal that shall guide our fraternity activities. We, as fraternity women, stand for service through the development of character inspired by the close contact and deep friendship of individual fraternity and Panhellenic life. The opportunity for wide and wise human service, through mutual respect and helpfulness, is the tenet by which we strive to live.



Making Gameday Cute

Curated collections of university-themed silk scarves and hair twillies.

Inspired by recent trends and timeless styles, our scarves are the perfect accessory to any girly gameday fix.

All scarves are made of 100% silk and are guaranteed to last through your craziest, or laziest, of Saturdays.



www.saturdaysilks.com

hello@saturdaysilks.com

Thank You to Our Sponsors for Your Support

Ames Layne

Cindy Crofford Photography

French Cuff Boutique

The Social Note

Jordan Scheiner Photography

Margaret Rotan Photography

Saturday Silks

Swoon Apparel + Accessories

The Monogram Shop

Houston Alumnae Panhellenic Foundation (HAPF)

Please support these businesses in our Houston Community.

Follow HAPA on Social Media

